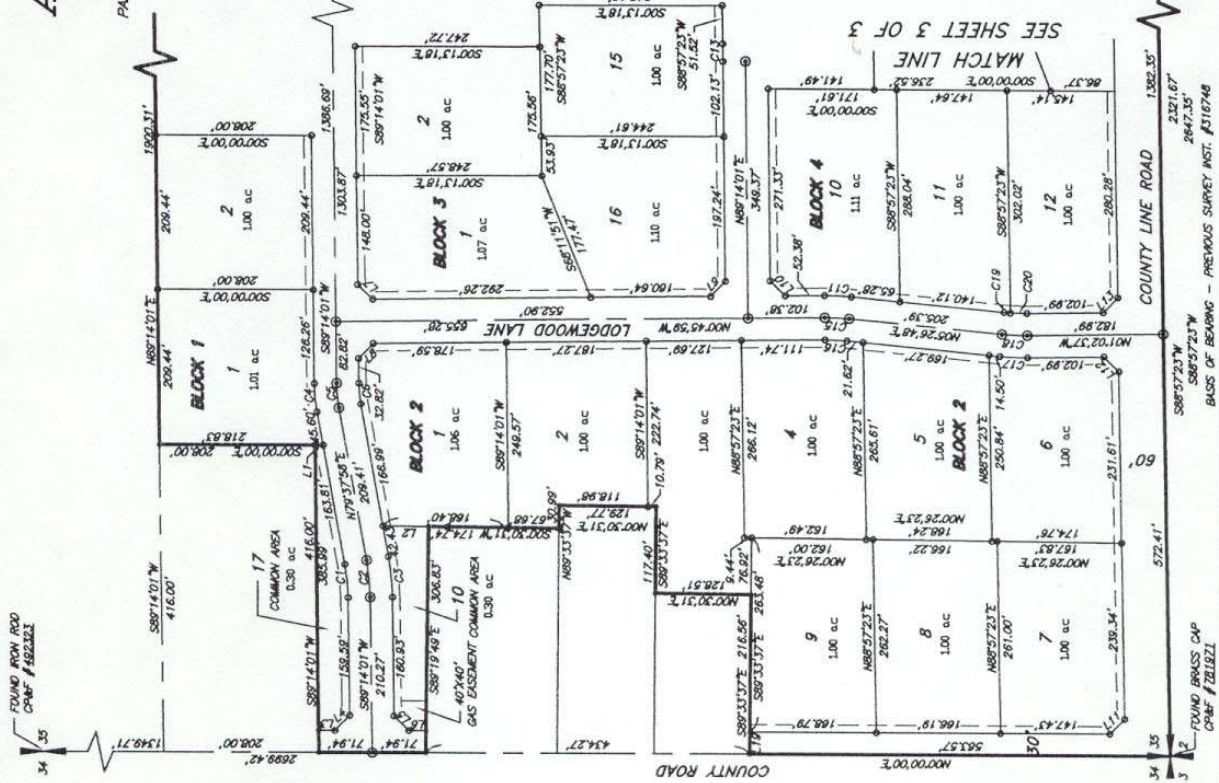


# ASPEN HEIGHTS

## DIVISION NO. 1

PART OF THE SECTION 35, T. 4 N., R. 38 E., B.M.  
JEFFERSON COUNTY, IDAHO



CURVE TABLE

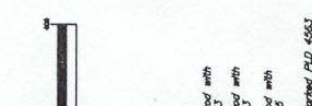
| CURVE LENGTH | RADIUS | CHORD BEARING | CHORD LENGTH | DELTA     |
|--------------|--------|---------------|--------------|-----------|
| C1           | 50.00  | N88°14'01"W   | 50.00        | 90°00'00" |
| C2           | 50.00  | N88°14'01"W   | 50.00        | 90°00'00" |
| C3           | 50.00  | N88°14'01"W   | 50.00        | 90°00'00" |
| C4           | 50.00  | N88°14'01"W   | 50.00        | 90°00'00" |
| C5           | 50.00  | N88°14'01"W   | 50.00        | 90°00'00" |
| C6           | 50.00  | N88°14'01"W   | 50.00        | 90°00'00" |
| C7           | 50.00  | N88°14'01"W   | 50.00        | 90°00'00" |
| C8           | 50.00  | N88°14'01"W   | 50.00        | 90°00'00" |
| C9           | 50.00  | N88°14'01"W   | 50.00        | 90°00'00" |
| C10          | 50.00  | N88°14'01"W   | 50.00        | 90°00'00" |
| C11          | 50.00  | N88°14'01"W   | 50.00        | 90°00'00" |
| C12          | 50.00  | N88°14'01"W   | 50.00        | 90°00'00" |
| C13          | 50.00  | N88°14'01"W   | 50.00        | 90°00'00" |
| C14          | 50.00  | N88°14'01"W   | 50.00        | 90°00'00" |
| C15          | 50.00  | N88°14'01"W   | 50.00        | 90°00'00" |
| C16          | 50.00  | N88°14'01"W   | 50.00        | 90°00'00" |
| C17          | 50.00  | N88°14'01"W   | 50.00        | 90°00'00" |
| C18          | 50.00  | N88°14'01"W   | 50.00        | 90°00'00" |
| C19          | 50.00  | N88°14'01"W   | 50.00        | 90°00'00" |
| C20          | 50.00  | N88°14'01"W   | 50.00        | 90°00'00" |
| C21          | 50.00  | N88°14'01"W   | 50.00        | 90°00'00" |
| C22          | 50.00  | N88°14'01"W   | 50.00        | 90°00'00" |
| C23          | 50.00  | N88°14'01"W   | 50.00        | 90°00'00" |
| C24          | 50.00  | N88°14'01"W   | 50.00        | 90°00'00" |
| C25          | 50.00  | N88°14'01"W   | 50.00        | 90°00'00" |
| C26          | 50.00  | N88°14'01"W   | 50.00        | 90°00'00" |
| C27          | 50.00  | N88°14'01"W   | 50.00        | 90°00'00" |
| C28          | 50.00  | N88°14'01"W   | 50.00        | 90°00'00" |
| C29          | 50.00  | N88°14'01"W   | 50.00        | 90°00'00" |
| C30          | 50.00  | N88°14'01"W   | 50.00        | 90°00'00" |

LINE TABLE

| LINE | LENGTH | BEARING     |
|------|--------|-------------|
| L1   | 416.00 | N88°14'01"W |
| L2   | 50.00  | N88°14'01"W |
| L3   | 50.00  | N88°14'01"W |
| L4   | 50.00  | N88°14'01"W |
| L5   | 50.00  | N88°14'01"W |
| L6   | 50.00  | N88°14'01"W |
| L7   | 50.00  | N88°14'01"W |
| L8   | 50.00  | N88°14'01"W |
| L9   | 50.00  | N88°14'01"W |
| L10  | 50.00  | N88°14'01"W |
| L11  | 50.00  | N88°14'01"W |
| L12  | 50.00  | N88°14'01"W |
| L13  | 50.00  | N88°14'01"W |
| L14  | 50.00  | N88°14'01"W |
| L15  | 50.00  | N88°14'01"W |
| L16  | 50.00  | N88°14'01"W |
| L17  | 50.00  | N88°14'01"W |
| L18  | 50.00  | N88°14'01"W |
| L19  | 50.00  | N88°14'01"W |
| L20  | 50.00  | N88°14'01"W |
| L21  | 50.00  | N88°14'01"W |
| L22  | 50.00  | N88°14'01"W |
| L23  | 50.00  | N88°14'01"W |
| L24  | 50.00  | N88°14'01"W |
| L25  | 50.00  | N88°14'01"W |
| L26  | 50.00  | N88°14'01"W |

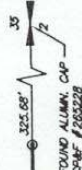


MATCH LINE  
SEE SHEET 3 OF 3



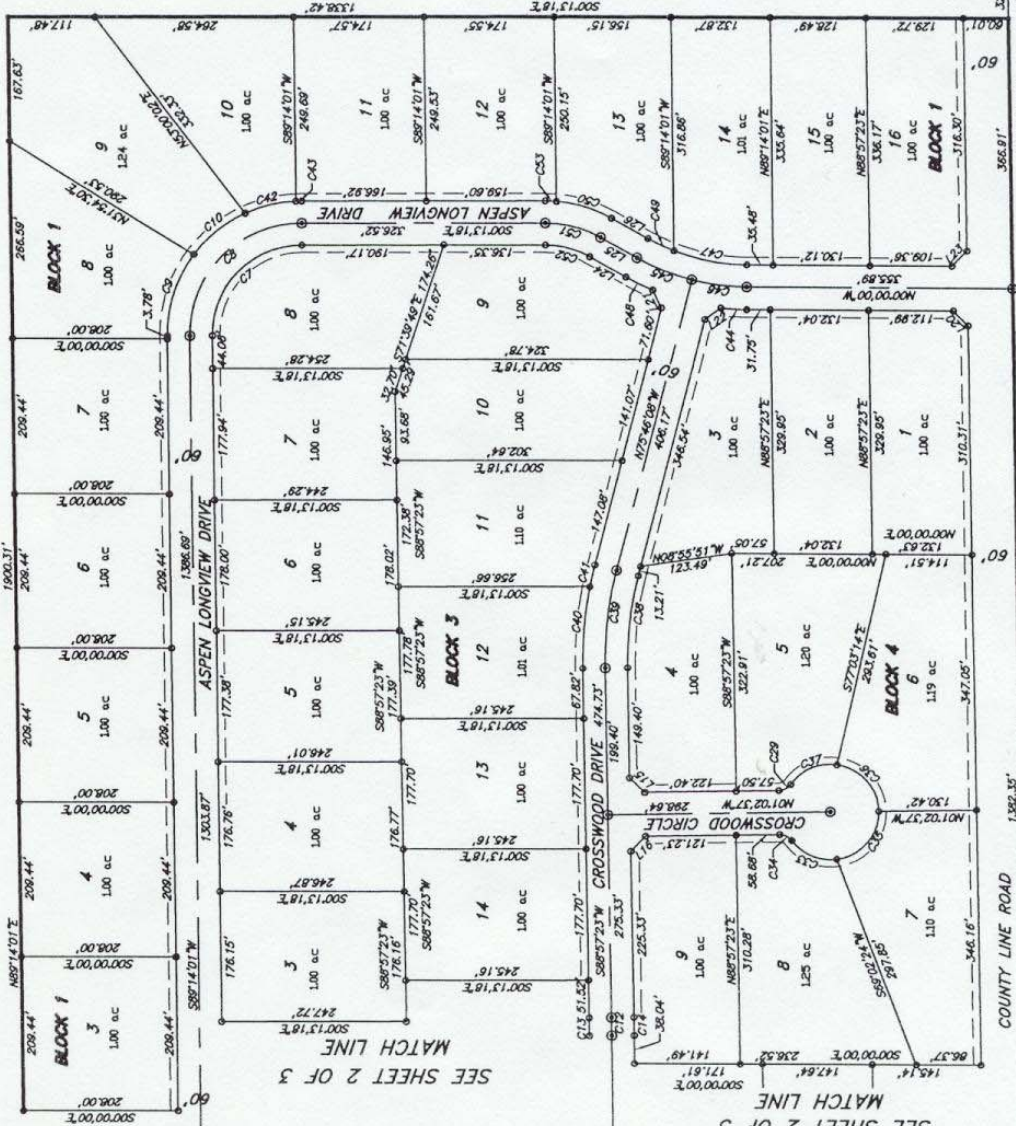
LEGEND  
 Section control corners  
 Placed 5/8" x 3/8" iron rod with  
 cap marked P.L.S. 4563  
 Placed 1/2" x 3/4" iron rod with  
 cap marked P.L.S. 4563  
 Found 1/2" x 3/4" iron rod with  
 cap marked P.L.S. 8795  
 3/8" # 4 W/L CAP Marked P.D. 4563  
 Monument to be placed after construction.  
 Utility easements are 10' wide  
 along the street frontage of all lots.

SHEET 2 OF 3  
**HARPER-LEAVITT ENGINEERING, INC.**  
 PROFESSIONAL ENGINEERS AND LAND SURVEYORS  
 805 N. CAPITAL AVE., P.O. BOX 80861, SAND FALLS, IDAHO 83401  
 (208) 834-0811



# ASPEN HEIGHTS DIVISION NO. 1

PART OF THE SECTION 35, T. 4 N., R. 36 E., B.M.  
JEFFERSON COUNTY, IDAHO



### LEGEND

- Section control corners
- Placed 5/8" x 30" iron rod with cap marked P.L.S. 4563
- Placed 1/2" x 24" iron rod with cap marked P.L.S. 4563
- 5/8" IR W/ AL CAP Marked PLD 4563 Monument to be placed after construction
- 1896 measurements are 10' wide along the street frontage of all lots.



SEE SHEET 2 OF 3

SEE SHEET 2 OF 3

SHEET 3 OF 3

**HARPER-LEAVITT ENGINEERING, INC.**  
PROFESSIONAL ENGINEERS AND LAND SURVEYORS  
805 N. CAPITAL AVE., P.O. BOX 50861, BOISE FALLS, IDAHO 83420  
(208) 334-0112

2321.67'  
2647.35'  
BASIS OF BEARING - PREVIOUS SURVEY INST. #516748